
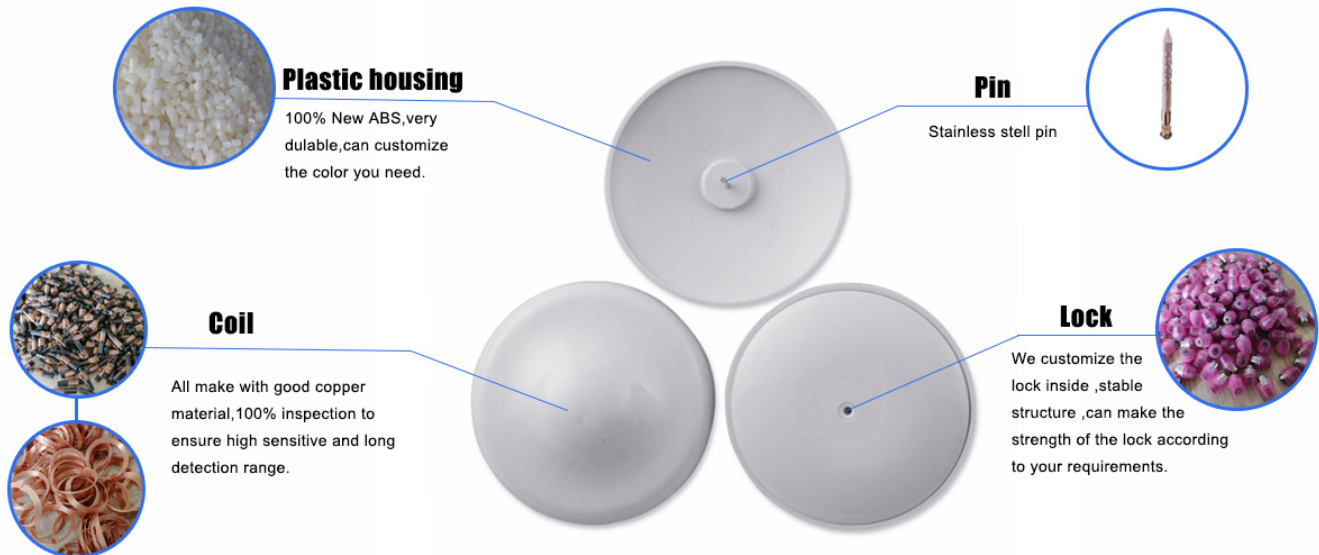


Retail EAS Security Hard Tag with High Performance(HA019)

HA019 Hard Tag		
	Model	
	Function	
	Frequency	
	Dimension	
	Color	
	Lock	
	Pulling force	
	Packing	



Our factory has been committed to the development and production of hard labels for more than 20 years, and this kind of labels are mainly used in supermarkets and some retail stores to prevent theft. In order to meet the different needs of customers, we will also customize the LOGO, color and shape of the label.

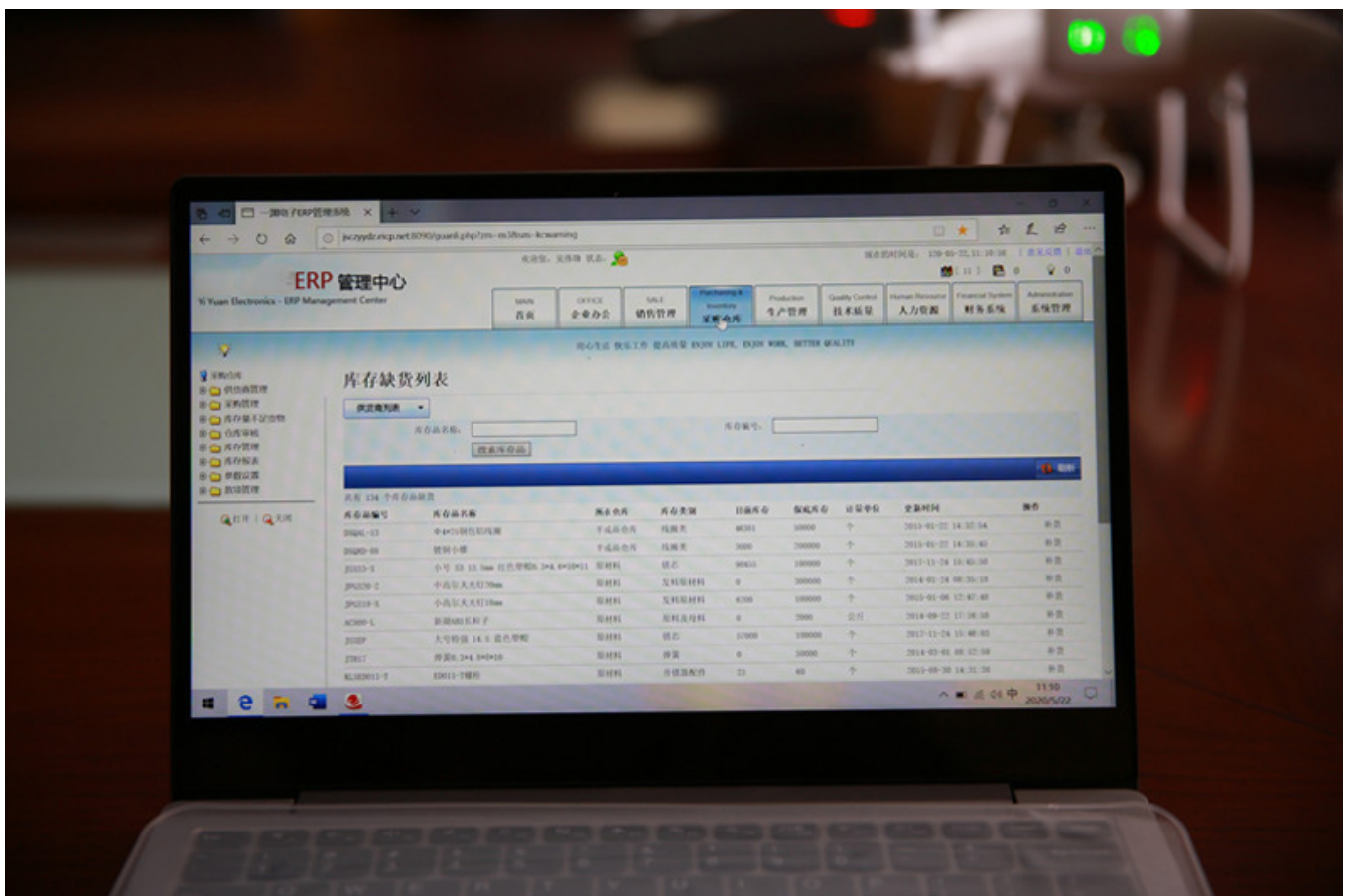
Every raw material in the hard tag is selected with the best quality. This kind of label can completely meet the customer's standard in terms of anti-theft performance and detection distance. The quality

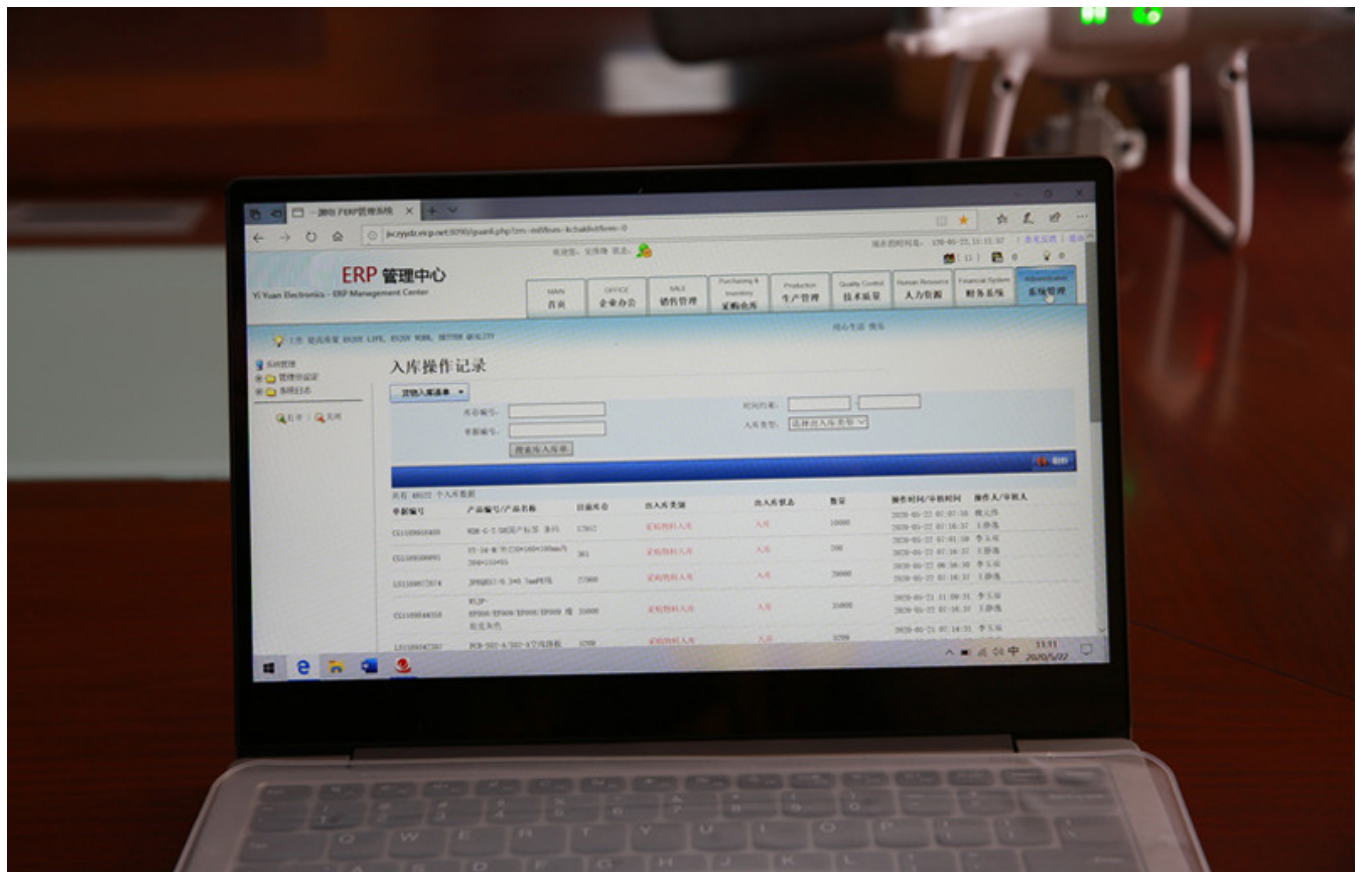
is also very resistant to falling.

Our hard tag production process is standard assembly line production, which greatly improves production efficiency. Ultrasonic welding is used to make the hard tag shell stronger. At the same time, we will carry out full inspection after the finished products are assembled to ensure that each label can work normally.

[VIEW MORE](#)

Our ERP system manages each order placed by customers from the aspects of procurement, inventory, production and sales, which can effectively reduce the workload of salesmen and improve work efficiency.

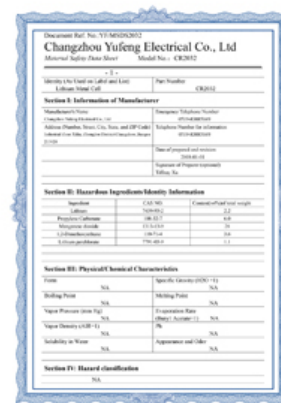




CE Certificate



ISO9001



MSDS



ROHS



ROHS Report



Patent





















Product link : <https://www.channel-tag.com/?p=1704>