
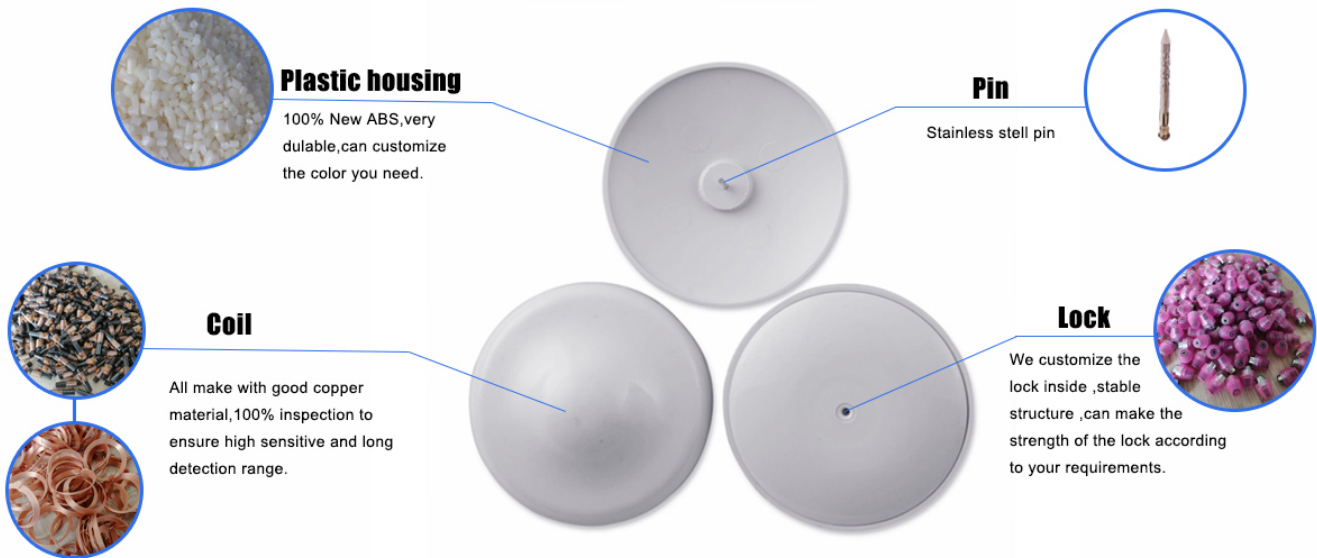


Factory Made Glasses Shop Anti-theft Optical Security Tag(F03)

F03 Optical Tag		
	Model	
	Frequency	8.2
	Dimension	35
	Color	Black/C
	Packing	1000pcs



Our factory has been committed to the development and production of hard labels for more than 20 years, and this kind of labels are mainly used in supermarkets and some retail stores to prevent theft. In order to meet the different needs of customers, we will also customize the LOGO, color and shape of the label.

The inner coil or other raw materials used by our hard label are of the highest quality. The new ABS material makes the anti-theft performance of the hard label better.

Every step of our hard tag production is completed by professionals, assembly line production plus semi-mechanized production, greatly increasing the output of hard tags. High quality raw materials make the label more resistant to falling, and full inspection also makes its anti-theft performance more guaranteed.

[VIEW MORE](#)

We use the professional ERP system to manage all the orders, it have the record since the first order of our customer ,can also well managed each process of every order .





CE Certificate



ISO9001



MSDS



ROHS



ROHS Report



Patent





















Product link : <https://www.channel-tag.com/?p=1681>