
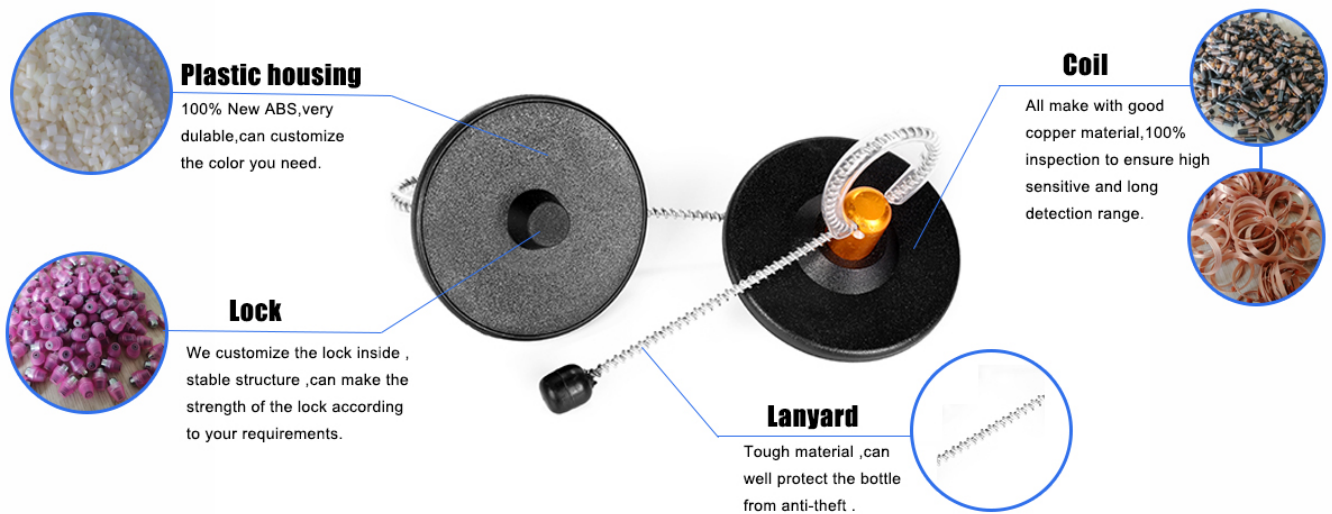


Retail Security Bottle Neck Tags(BT006)

BT006 Bottle Tag		
	Model	BT006
	Application	Wine and spirits
	Outer Dimension	Ø50mm*32mm
	Weight	21.84g/PC
	Frequency	8.2MHz/58KHz/8.2MHz+58KHz
	Lock	Standard / Super
	Packing	250pcs/ctn, 0.03cbm, 6.3kg



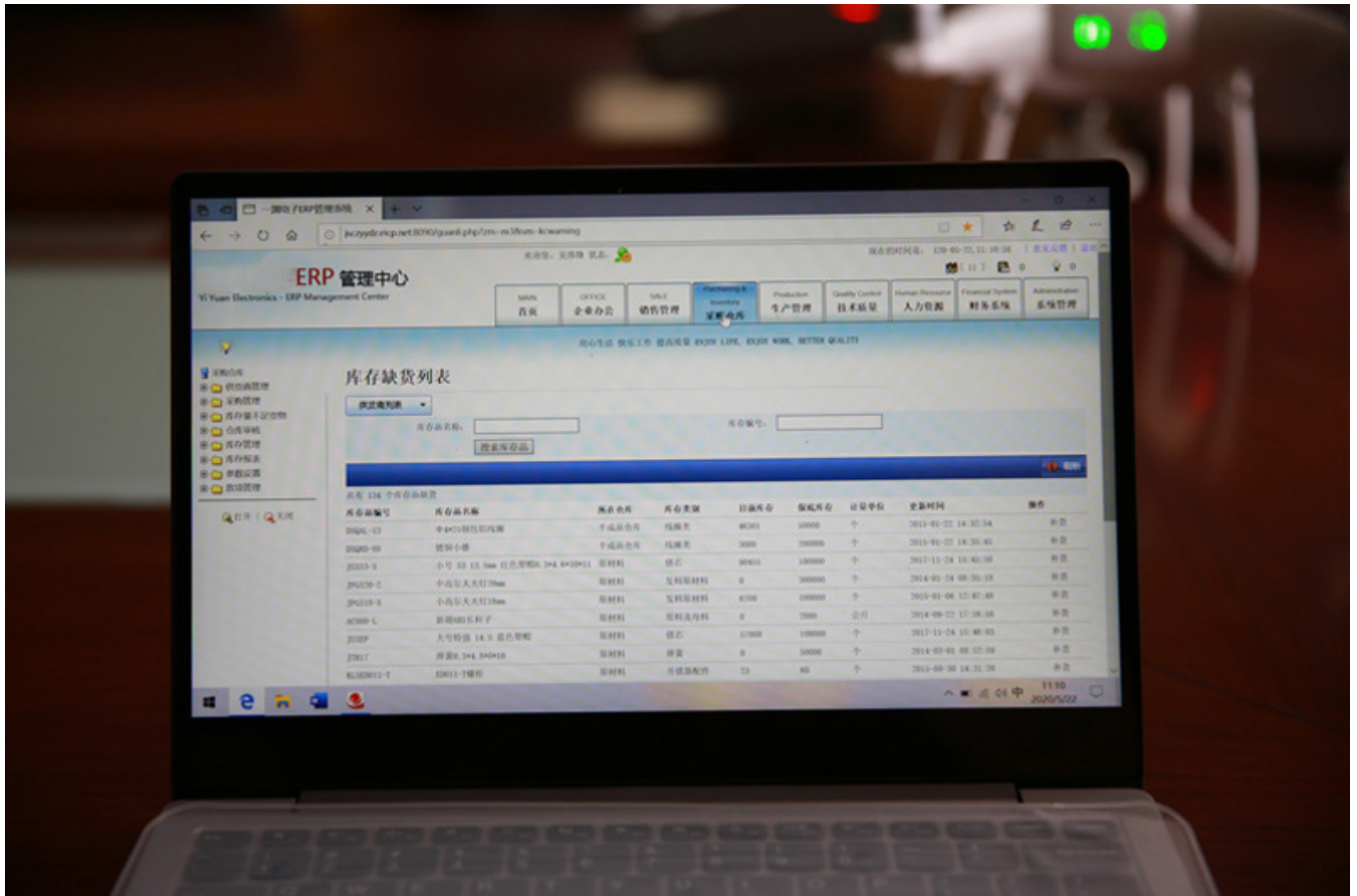
The bottle tag is an important label for the protection of bottled products. It is used at the bottleneck of the bottle, which will not affect the beauty of the goods, but also have an excellent anti-theft effect. bottle tag is suitable for stores using 8.2mhz /58KHZ access control system and can be opened with magnetic lockpicker.

Every raw material in the bottle tag is selected with the best quality. This kind of label can completely meet the customer's standard in terms of anti-theft performance and detection distance. The quality is also very resistant to falling.

We are all completed by the production line, from the purchase of raw materials to the assembly of accessories, to ultrasonic welding to finish the final product, are all operated by professionals. In order to ensure that the label can work normally, we will also carry out full inspection of the bottle tag, so that it absolutely has excellent anti-theft performance.

[VIEW MORE](#)

We use the professional ERP system to manage all the orders, it have the record since the first order of our customer ,can also well managed each process of every order .























Product link : <https://www.channel-tag.com/?p=1202>